



VISIONIX
The Vision of the Future

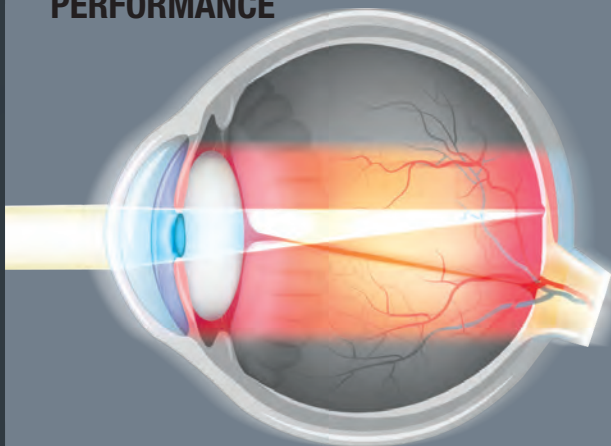
VX100
Diagnostic

One-Touch High-end Refraction, Vision Analysis and
Topography

VX100

The VX 100 is a unique, complete, and fully automatic refraction and topography device. The VX 100 features variations of refraction, pathologies such as keratoconus, and fitting of contact lenses with integrated topography. With full integration in mind, the VX 100 is designed to be able to export measurements and findings and archive your data using WiFi, USB key, office networks, etc.

REFRACTION AND VISUAL PERFORMANCE

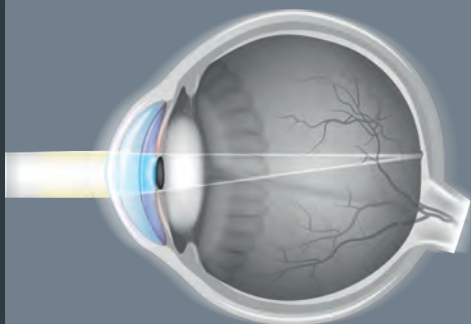


- > Extremely precise refraction (cylinder and axis)
- > Refraction on small pupils 1.2 / 1.4 mm
- > 1400 points of analysis for a pupil of 7 mm
- > Measurement of daytime vision and nighttime vision

TECHNOLOGY: Analysis of the wavefront with the Shack-Hartmann sensor.

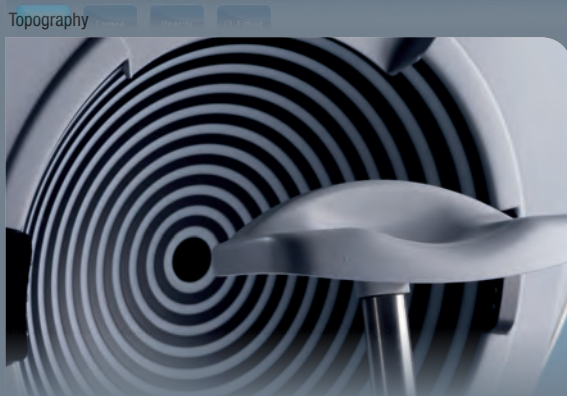


CORNEA ANALYSIS



- > Contact lenses and fitting
- > Screening keratoconus and corneal pathologies

TECHNOLOGY: Analysis of the wavefront using the Shack-Hartmann sensor, Placido disk.



Fully automated

- Fully automatic 3D and R/L eye alignments
- Operator independent measurements
- High reproducibility of measurements

Automatic alignment and measurement which allows

- High reliability for measurements
- Significant time savings
- Optimal comfort based on ergonomic design

Additional customers benefits

- Quick detection of refraction and warning indications for measurements outside of normal parameters
- Easily transfer patient measurements to the doctor for exam
- A refined and highly accurate refraction due to advanced technology and added features

Ready for communication

The VX 100 can be set up in a network to integrate with your patient management software and provide a variety of communication options to optimize your work flow.

- Review results from any supported device (tablet, smartphone, etc.)
- Print directly from your local or network printer
- Customize your reports
- Synchronize data, graphs, and maps for any examination
- Communication enabled with other instruments

WEBSERVICE



VX REFRACTION LINE



CUSTOMIZABLE REPORTS



OFFLINE VERSION



PATIENT MANAGEMENT SOFTWARE



Technical data

General	
Dimensions	W 320 mm x D 555 mm x H 540 mm W 12.59 in. x D 21.8 in x H 21.25
Weight	27 kg / 59.5 lbs.
Working distance	94 mm
Alignment	XYZ automatic
Display	10,1" (1 024 x 600) TFT screen Multi-touch screen
Observation area	ø 14 mm
Printer	Integrated black and white - external color available
Voltage	100/120, 220/240 V CA, 50/60 Hz, 300 W
Medical directive	CE 0473
Output	RS232 / USB / VGA / LAN

AR & power mapping (Wavefront)	
Spherical power range	-20D to +20D
Cylinder power range	0D to + 8D
Axis	0 to 180°
Measuring area	Min. ø 2 mm - Max. 7 mm (3 areas)
Number of measuring points	1,500 points
Acquisition time.	0.2 sec
Method	Shack-Hartmann

Corneal topography	
Number of rings	24
Number of measuring points	6,144
Number of points analyzed	More than 100,000
Diameter of covered corneal area at 43D	From 0.33 mm to more than 10 mm
Diopters measured field	From 1 to 100
Repeatability	0.02 mm
Method	Placido rings

